

PREPARATION AND DOSE PACKAGING

WNB WATER BAIN MARIE

Water bain marie model WNB, with external casing and stainless steel tank. Equipped with drain cock.

Temperature range from 5°C above room temperature to 95°C and with boiling point 100°C. Solid state control panel with digital display for visualization setting of all parameters and temperature with 0.1°C resolution.

With 1 temperature probe, 4-wire Pt100 class A.

Digital timer from 1 to 99.59.

Continuous operation.

Delayed start and / or stop with continuous maintenance or for a specified time of the set temperature. Display of set / current temperature and remaining time. Easy to clean.

Lid available on request.

| CODICE | DESCRIZIONE |
|---------|------------------------------|
| 1907165 | WNB Water bain marie 14 lt |
| 1907166 | WNB Water bain main 22 lt |
| 1907167 | Lid for WNB Water bain marie |



HEATING SYSTEMS

Heater for the preparation of large quantities of semen extender, equipped with 50 lt tank with independent stirrer and probe for the temperature control. It is provided with a double electronic temperature control to ensure a fast heating with the first control and a constant keeping of the desired temperatures with the second one.

Thermostation stability +/- 0,5 °C.

Thermostat 18 lt capacity, equipped with two trays, for the preservation of seminal material. Equipped with internal ventilation system.

Temperature range: 17°C to 40°C.

Supply voltage/frequency in V/Hz: 100-240/50-60.

Measures (wxhxd) internal: 180 x 310 x 290 mm.

Measures (wxhxd) external: 260 x 415 x 470 mm.

| CODE | DESCRIPTION |
|---------|--|
| 1907054 | Heater for the preparation of semen extender |
| 1907050 | Thermostat 18 lt |



COD. 1907054



COD. 1907050

PREPARATION AND DOSE PACKAGING

PORTABLE DIGITAL PHMETER

It performs fast and accurate measurements with a resolution of 0.01.
Replaceable pH electrode.
Battery life: 3000 hours of continuous use.
Manual calibration at 2 points.

| CODE | DESCRIPTION |
|---------|--------------------------|
| 3947108 | Portable digital pHmeter |



COD. 3947108

POCKET METER

The instrument simultaneously measures pH and redox potential, it measures the temperature too and constantly displays it on the large screen at two levels. The temperature sensor, stayed in a metal tube, has a fast response time thanks to its external position. The indicator of instability of the measurement allows the detection of reliable readings. Designed with an ergonomic style, is able to float thus making easier the recovery in case of accidental fall into the water.

| CODE | DESCRIPTION |
|---------|--------------|
| 3947164 | Pocket meter |



COD. 3947164

WATER FOR LABORATORY

Bidistilled water packaged in Bag in Box 20 lt, with tap water.
Bidistilled water packaged in plastic tank 20 lt.
Sterile pyrogen-free water in the bags.

| CODE | DESCRIPTION |
|----------|--|
| 1907060 | Bidistilled water in cubitainer |
| 1907059 | Bidistilled water in tank |
| 1907136B | Sterile water in 1 lt bag (pack 10 lt) |
| 1907094B | Sterile water in 2 lt bag (pack 10 lt) |
| 1907057B | Sterile water in 3 lt bag (pack 12 lt) |
| 1907058B | Sterile water in 5 lt bag (pack 10 lt) |



COD. 1907060



COD. 1907059



PREPARATION AND DOSE PACKAGING

RECLOSABLE BAG

Disposable reclosable bag, designed to contain up to 5 lt, that improves the material preparation hygienic conditions and completely eliminates the use of glassware and sterilization instruments in the laboratory. The connection cap ensures its sterility until it is used to fill the bag.

COD. 1907020

COD. 1907019

| CODE | DESCRIPTION |
|---------|------------------------------------|
| 1907020 | Disposable bag 3 lt (pack 20 pcs.) |
| 1907019 | Disposable bag 5 lt (pack 20 pcs.) |



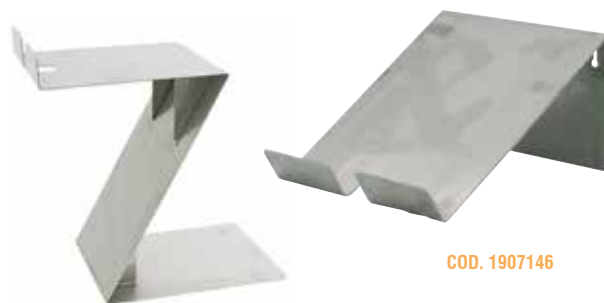
TRAY AND SUPPORT FOR BAG

Tray made in plastic material, it allows to handle reclosable bag and makes the filling and weighing phases easier. Extremely economical and functional.

Stainless steel support for the seminal material packaging operations from the disposable reclosable bag to the aluminium bag.

Available the table support and the wall support.

| CODE | DESCRIPTION |
|---------|-------------------------|
| 1907145 | Tray for reclosable bag |
| 1907147 | Table support for bag |
| 1907146 | Wall support for bag |



COD. 1907147

COD. 1907146



COD. 1907145

ACCESSORIES FOR RECLOSABLE BAG

The **plugs** are equipped with tubes of various diameter and material.

To be used for the transfer of the liquid contained in reclosable bags.

The **funnel** is used for the preparations of the diluter and for the transfer of semen material collected.

The **clip** allows to stop the flow of liquid inside the tubes supplied to the plugs.

Available in plastic and metal.

| CODE | DESCRIPTION |
|---------|--|
| 1907021 | Dispensing plug (pack 20 pcs.) |
| 1907113 | Plug for peristaltic pump (pack 20 pcs.) |
| 1907116 | System funnel for semen |
| 1907114 | Metal clip |
| 1907115 | Plastic clip |



COD. 1907021

COD. 1907113



COD. 1907116



COD. 1907115



COD. 1907114

PREPARATION AND DOSE PACKAGING

MEDI NOVA SCALE

Medi Nova scale for laboratory with stainless steel weighing plate. Ideal instrument to correctly assess the seminal material weight. It is used during the preparation of the extender to correctly dose the water and to check the quantity of semen obtained during the collection. Weighing fast and reliable. Maximum load 15 kg division 10 gr. Measures (wxdxh): 310 x 300 x 55 mm. Support for the display on request.

| CODE | DESCRIPTION |
|---------|--------------------------------|
| 3947123 | Medi Nova scale for laboratory |



COD. 3947123

AUTOMATIC MEDI FILLING SUPER 100

The Automatic Medi filling Super 100 is a complete pneumatic PLC controlled machine offering filling, sealing, cutting and labelling solution for fresh semen production.

| CODE | DESCRIPTION |
|---------|----------------------------------|
| 1907122 | Automatic Medi filling Super 100 |



COD. 1907122

SEMI-AUTOMATIC MACHINE

Semi-automatic machine for packaging of semen material in flexible bags. Equipped with a peristaltic pump for dosing of semen material inside the flexible bags roll. To facilitate the use and limit the overall dimensions the machine is supplied by an assembly kit. Available on request the labeling system manual.

| CODE | DESCRIPTION |
|---------|----------------------------------|
| 1907131 | Medi Nova semi-automatic machine |
| 1907132 | Pedal for peristaltic pump |



COD. 1907131

PREPARATION AND DOSE PACKAGING

FLEXIBLE BAGS ROLL

Flexible plastic bags for storage and conservation of the diluted semen in individual doses. Tightly closed, they conserve the maxim hygiene until they are used, avoiding any contamination. Flexible, they allow the total drainage of the dose, avoiding any contact with the air. Available in different measures. Green colour.

| CODE | DESCRIPTION |
|---------|---|
| 1908003 | Bags roll with green plug 25 cm, Vol 100 ml (pack 250 pcs.) |
| 1908004 | Bags roll with white plug 21 cm, Vol 50 ml (pack 250 pcs.) |



COD. 1908003

FLEXIBLE ALUMINIUM BAGS

Flexible aluminium bags for storage and conservation of the diluted semen in individual doses. It protects the semen doses from light. Tightly closed, they conserve the maxim hygiene until they are used, avoiding any contamination. Flexible, they allow the total drainage of the dose, avoiding any contact with the air.

| CODE | DESCRIPTION |
|---------|---|
| 1908002 | Aluminium bag for A.I. (pack 1000 pcs.) |



COD. 1908002

BOTTLES AND TUBES

Graded plastic containers with reclosable screw plug with caps of 5 different colors. Suitable for the preservation of semen material pigs. Available square bottle to optimize storage spaces.

Cylindrical plastic container equipped of spout, with easy opening. Suitable for the conservation of semen material.

Once filled can be closed by thermal welding or with the use of a special plier. Also available plier to the temporary closure of the tubes.

| CODE | DESCRIPTION |
|---------|--|
| 1908009 | Bottle 100 ml (pack 500 pcs.) |
| 1908030 | Square bottle 100 ml (pack 600 pcs.) |
| 1908001 | Tube for A.I. easy opening, graduated (pack 1000 pcs.) |
| 1908012 | Plier for tubes closure |



COD. 1908009



COD. 1908001

COD. 1908012